



前來邂逅花海絕景!

Make a trip out to see magnificent views of beautiful flowers!

西武鐵道沿線從春天到冬天一整年都有許多美麗的花海景點。邀請大家前來邂逅隨季節變化的日本絕景，探訪花卉樂園。

Along the Seibu Railway Lines, you'll find many places with breathtaking views of beautiful flowers throughout the year from spring to winter. Visit these paradises of flowers and see Japan's amazing landscapes that change with the seasons.

西武線沿線花海絕景年曆 Seibu Line Flower Calendar

	春 / Spring	夏 / Summer	秋 / Autumn	冬 / Winter
櫻花 Cherry Blossoms	3月下旬~4月中旬 Late March to mid-April			
芝櫻 Moss Pink	4月中旬~5月上旬 Mid-April to early May			
罌粟花 Poppies		5月中旬~6月上旬 Mid-May to early June		
繡球花 Hydrangeas		5月下旬~6月下旬 Late May to late June		
花菖蒲 Iris		6月上旬~6月中旬 Early to mid-June		
百合 Lilies		6月上旬~7月上旬 Early June to early July		
向日葵 Sunflowers			8月中旬~9月上旬 Mid-August to early September	
曼珠沙華 Red Spider Lilies			9月中旬~10月上旬 Mid-September to early October	
波斯菊 Cosmos			9月中旬~11月上旬 Mid-September to early November	
臘梅 Wintersweet				1月下旬~3月上旬 Late January to early March



購買超值車票到西武線沿線賞花景點漫步吧!

Purchase the discount train tickets if you want to explore the various places with beautiful flowers along the Seibu Lines.

SEIBU 1 Day Pass

- ◆ 西武線全線自由暢乘1日券(除多摩川線)
- ◆ 有効期限:限販售當日有效 ◆ 特急券須另外購買
- ◆ Unlimited rides on all Seibu Lines (excluding the Tamagawa Line) for one day
- ◆ Term of validity: Only valid for the date of purchase
- ◆ Limited express tickets must be purchased separately

成人 / Adult **¥1,000** 兒童 / Child **¥500**

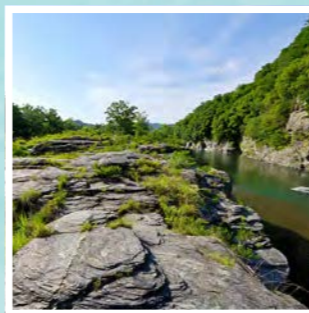
SEIBU 1 Day Pass + Nagatoro

- ◆ 西武線全線(除多摩川線)以及秩父鐵道(三峰站~野上站)的自由暢乘1日券
- ◆ 有効期限:限販售當日有效 ◆ 特急券須另外購買
- ◆ Unlimited rides on all Seibu Lines (excluding the Tamagawa Line) and the Chichibu Railway Line (between Mitsumineguchi Station and Nogami Station) for one day
- ◆ Term of validity: Only valid for the date of purchase
- ◆ Limited express tickets must be purchased separately

成人 / Adult **¥1,500** 兒童 / Child **¥750**

SEIBU 2 Day Pass 請看這裡

For more information on the SEIBU 2 Day Pass, scan the QR code.



售票地點 Ticket sales offices



西武池袋
旅遊服務中心
SEIBU Tourist
Information Center Ikebukuro
售票時間 / Ticket sales hours
8:00-15:00



西武池袋站
特急券售票處(1樓・地下)
Limited Express Ticket Office at
Seibu Ikebukuro Station (1F, B1F)
售票時間 / Ticket sales hours
7:00-20:00



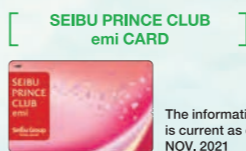
西武新宿站
特急券售票處
Limited Express Ticket Office
at Seibu Shinjuku Station
售票時間 / Ticket sales hours
7:00-20:00

線上購票方法 How to purchase tickets online

可以在線上購買SEIBU 1DAY Pass、SEIBU 1DAY Pass + Nagatoro兩種票券。
The SEIBU 1 DAY Pass and the SEIBU 1 DAY Pass + Nagatoro can be purchased online.

售票對象 Eligibility

- 訪日外國旅客
Foreign Visitors
- ※購買時需出示下列任一項。
● 日本以外的護照 ● 在留卡
● 西武集團發行的訪日外國人用「SEIBU PRINCE CLUB emi卡」
 - * You will be asked to present one of the following at the time of purchase.
• A passport from a country other than Japan.
• Residence card.
• A SEIBU PRINCE CLUB emi card, which is a card issued by the Seibu Group to foreign visitors.



詢問
Inquiries

西武鐵道客戶服務中心
西武鐵道網站
SEIBU RAILWAY Customer Center
SEIBU RAILWAY website

電話: +81-(0)4-2996-2888 [營業時間縮短為 9:00~17:00 (全日)]
※為預防旅客及工作人員感染新冠病毒並防止感染規模擴大，目前平日的營業時間縮短。敬請諒解。
https://www.seiburailway.jp/railways/tourist/chinese/

TEL: +81-(0)4-2996-2888 [Shortened business hours: 9:00-17:00 (every day)]
* In order to prevent infection and the spread of infection of COVID-19 among passengers and employees, weekday business hours have been shortened until further notice.
https://www.seiburailway.jp/railways/tourist/english/



SEIBU RAILWAY Flower Walking Guide



與美艷壯觀的花卉共譜美好回憶!

Let's make memories with magnificent flowers!





多摩湖・狭山湖 [櫻花]
Lake Tama/Lake Sayama [Cherry Blossoms]

從多摩湖一路延伸到狭山湖，是都內首屈一指的賞櫻名勝。種植有染井吉野櫻及山櫻花等約4萬株櫻花，在狭山丘陵一帶美態盡開。可以一邊漫步環湖步道一邊賞櫻；也可以在狭山公園內優閒賞櫻。
One of the city's most famous cherry blossom viewing spots that extends from Lake Tama to Lake Sayama. Around 40,000 Somei Yoshino and Yamazakura trees blossom in full glory across the Sayama Hill area. Whether you choose to view the cherry blossoms while walking along the path around the lakes or leisurely view the cherry blossoms in Sayama Park, the view is sure to stun you.

花季 4月上旬~4月中旬
入園費用 免費
地點 東京都東大和市多摩湖4丁目
交通方式 多摩湖線「多摩湖」站步行5分鐘 / 或是狭山線「西武球場前」站步行10分鐘

Peak viewing season: Early to mid-April
Admission: Free
Address: 4-Chome, Tamako, Higashiyamato-shi, Tokyo
Access: 5-minute walk from Tamako Station on the Tamako Line / 10-minute walk from Seibukyo-mae Station on the Sayama Line

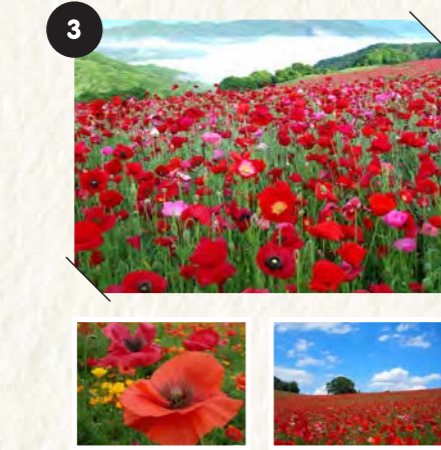


秩父市・羊山公園 [芝櫻]
Hitsujiyama Park, Chichibu City [Moss Pink]

羊山公園「芝櫻之丘」是關東屈指的芝櫻名勝，花季期間有9種、約40萬株的芝櫻爭奇鬥豔，像張粉紅地毯。
"Shibazakura Hill" of Hitsujiyama Park is one of the most famous moss pink viewing spots in the Kanto region. During the peak viewing season, some 400,000 moss pink plants of nine varieties come to full bloom in multiple hues, creating a carpet of pink.

花季 4月中旬~5月上旬
入園費用 收費 ※詳情請在管理地點確認。
地點 埼玉縣秩父市大宮6267 羊山公園
交通方式 從秩父線「秩父」站步行約20分鐘

Peak viewing season: Mid-May to early May
Admission: There is a fee.
Address: Hitsujiyama Park, 6267 Oniyasu, Chichibu-shi, Saitama
Access: About a 20-minute walk from Yokozaki Station on the Seibu-Chichibu Line



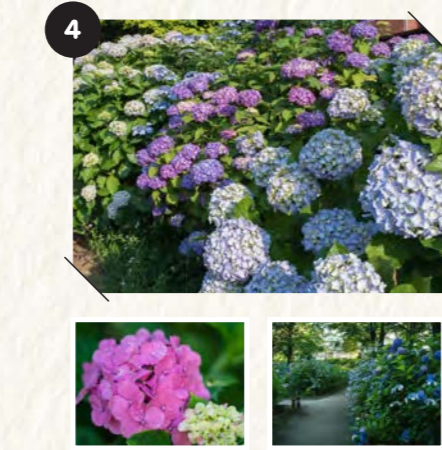
皆野町東秩父村・彩之國交流牧場 [罌粟花]
Sainokuni-Fureai-Bokujo (Saitama Petting Farm), Minano-machi Higashichichibu-mura [Poppies]

標高500公尺的高原上，有約1500萬朵罌粟花爭相綻放。可以欣賞遍地色澤鮮豔的罌粟花與頭頂廣闊的藍天構成的夢幻景色。

Roughly 15 million poppies bloom in full glory on a plateau at an altitude of 500 meters. The blanket of brightly colored poppies matched with expansive blue skies overhead create a stunning view.

花季 5月中旬~6月上旬
入園費用 收費 ※詳情請在管理地點確認。
地點 埼玉縣秩父市大宮6267 羊山公園
交通方式 秩父鐵道「皆野」站搭乘接駁巴士約20分鐘。僅於祭典舉辦日運行 ※詳情請向管理地點確認。

Peak viewing season: Mid-May to early June
Admission: There is a fee.
Address: 294-1 Saikamoto, Higashichichibu-mura, Chichibu-gun, Saitama
Access: About a 20-minute ride by shuttle bus from Chichibu Railway's Minano Station. (Shuttle bus only available on festival days)
*For details, check with the management office.



小平市・紫陽花公園 [繡球花]
Ajsai Park, Kodaira City [Hydrangeas]

在花朵的6月，有約1500株繡球花美態綻放。每種品種展現出不同神韻供人欣賞。
During the month of June, which is the best time for viewing hydrangeas, some 1,500 hydrangea plants come to full bloom in the park. The different varieties each have a unique beauty.

花季 5月下旬~6月下旬
入園費用 免費
地點 小平市美國町1-25-23
交通方式 新宿線「小平」站步行約20分鐘

Peak viewing season: Late May to early June
Admission: Free
Address: 1-25-23 Misono-cho, Kodaira-shi, Tokyo
Access: 5-minute walk from Kodaira Station on the Shinjuku Line



東村山市・北山公園菖蒲苑 [花菖蒲]
Iris Garden, Kitayama Park, Higashimurayama City [Iris]

由300種、約10萬株的花菖蒲綻放初夏。可以在綠意盎然的八國山下，一邊遠眺奔馳的西武鐵道電車，一邊享受悠閒時光。

In early summer, some 100,000 irises of 300 varieties bloom in this garden. Take a moment to relax and unwind while watching the Seibu Railway trains run along the foot of the expansive green Hachikoku mountains.

花季 6月上旬~6月下旬
入園費用 免費
地點 東京都東村山市野口町4丁目50番地
交通方式 從新宿線「東村山」站步行約20分鐘

Peak viewing season: Early June to late June
Admission: Free
Address: 4-50 Noguchi-cho, Higashimurayama-shi, Tokyo
Access: About a 20-minute walk from Higashi-Murayama Station on the Shinjuku Line



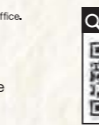
所澤百合園 [百合]
Tokorozawa Lily Garden [Lilies]

約3萬平方公尺的天然森林中，可以欣賞到50種、約45萬朵的百合爭相盛開，並同時享受森林浴和散步。

Enjoy a peaceful walk in the forest while viewing the 450,000 lilies of 50 varieties that bloom in the natural forest of roughly 30,000 square meters.

花季 6月中旬~7月上旬
入園費用 免費
地點 埼玉縣所澤市山ノ口2227
交通方式 狹山線「西武球場前」站步行約3分鐘

Peak viewing season: Mid-June to early July
Admission: There is a fee.
Address: 2227 Kami-Yamaguchi, Tokorozawa-shi, Saitama
Access: 3-minute walk from Seibukyo-mae Station on the Sayama Line



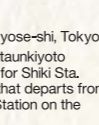
清瀨市・下清戶嘉年華會場 [向日葵]
Shimokiyoto Festival Venue, Kiyose City [Sunflowers]

廣闊的農地上有約10萬株向日葵綻放，風景堪稱一絕。邀您欣賞夏日藍天下，沐浴在陽光長大的壯觀向日葵。

The view of around 100,000 sunflowers blooming in full glory is simply breathtaking. Be sure to see the multitude of sunflowers that have grown soaking up the sun's rays under the blue skies of summer.

花季 8月中旬~8月下旬
入園費用 免費
地點 東京都清瀨市下清戶3丁目
交通方式 從池袋線「清瀨」站北口，搭乘西武巴士往「清61系統 志木南口」方向，在Green Town清瀨站下車後步行6分鐘 ※詳情請在管理地點確認。

Peak viewing season: Mid-August to late August
Admission: Free
Address: 3-Chome Shimokiyoto, Kiyose-shi, Tokyo
Access: 6-minute walk from Guntaizukiyoto bus stop on the "清61" for Shiki Sta. minamiguchi" Seibu Bus that departs from the North exit of Kiyose Station on the Ikebukuro Line
*For details, check with the management office.



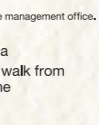
日高市・巾著田 [曼珠沙華]
Kinchakuda, Hidaka City [Red Spider Lily]

區域內有約500萬朵曼珠沙華爭相開放，是日本規模數一數二的曼珠沙華種植地。彼岸時期(秋分前後)會化為鮮紅的地毯鋪滿園內，遊客絡繹不絕。

Roughly 5 million red spider lilies bloom across the ground in Kinchakuda. It is one of the largest red spider lily fields in all of Japan. It's a popular spot during the period of the equinox, when the whole area is covered in a red carpet of flowers.

花季 9月中旬~10月上旬
入園費用 收費 ※詳情請在管理地點確認。
地點 埼玉縣日高市高橋本町125-2
交通方式 從池袋線「高麗」站步行約18分鐘

Peak viewing season: Mid-September to early October
Admission: There is a fee.
Address: 125-2 Komahongo, Hidaka-shi, Saitama
Access: About a 18-minute walk from Koma Station on the Ikebukuro Line



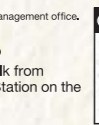
國營昭和紀念公園 [波斯菊]
Showa Kinen Park [Cosmos]

首都圈最大規模的波斯菊田，約有550萬株。園區設計為根據品種依次開花，可以賞花的期間相當長。

The largest cosmos field in the metropolitan area, with around 5.5 million cosmos flowers. It is designed so that the different varieties bloom in order, prolonging the period that the cosmos flowers can be enjoyed.

花季 9月上旬~11月上旬
入園費用 免費 ※詳情請在管理地點確認。
地點 東京都立川市綠町3173
交通方式 從拜島線「武藏砂川」站步行約17分鐘

Peak viewing season: Early September to early November
Admission: There is a fee.
Address: 3173 Midori-cho, Tachikawa-shi, Tokyo
Access: About a 17-minute walk from Musashi-Sunagawa Station on the Hajima Line



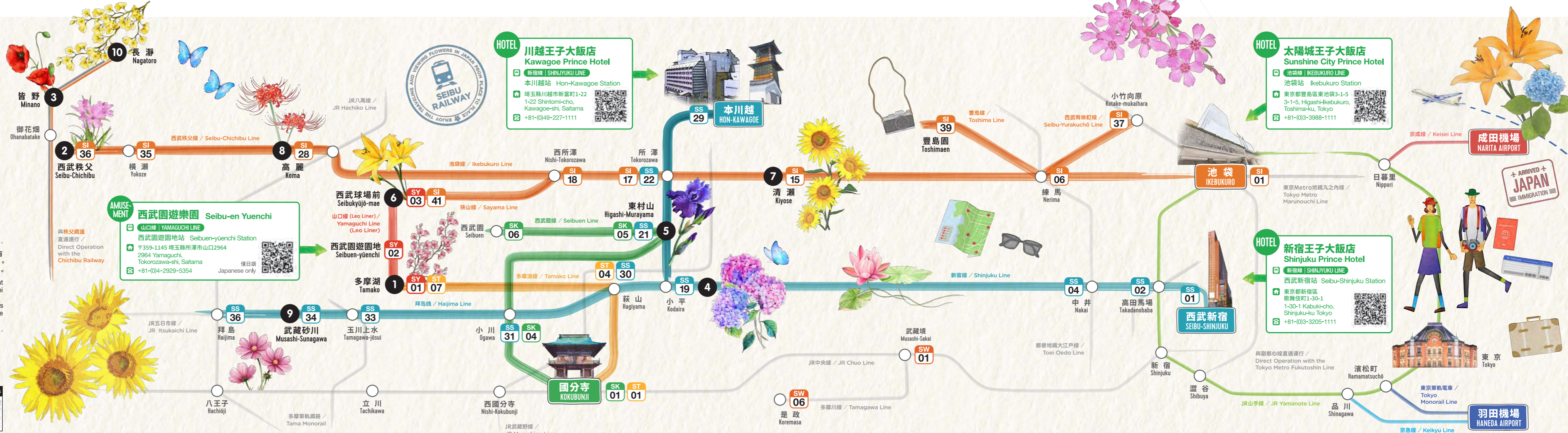
寶登山・蠟梅園 [蠟梅]
Hodosan Wintersweet Garden [Wintersweet]

寶登山山頂廣闊的蠟梅園中，有約3000株蠟梅環繞四周，空氣中瀰漫香甜香氣。從山頂向下俯瞰，全景視野絕佳。

Spreading over the top of Mt. Hodo, Wintersweet Garden contains some 3,000 wintersweet trees, whose flowers fill the air with a sweet, gentle fragrance. The summit commands a spectacular view.

花季 1月下旬~3月上旬
入園費用 免費
地點 埼玉縣秩父市長瀨町2595
交通方式 從秩父鐵道「長瀨」站步行約18分鐘。寶登山纜車從「山頂」站步行5分鐘 ※詳情請在管理地點確認。

Peak viewing season: Late January to early March
Admission: Free
Address: 2595 Nagatoro, Nagatoro-machi, Chichibu-gun, Saitama
Access: About a 18-minute walk from Nagatoro Station on the Chichibu Railway, and a 5-minute walk from Sancho Station on the Hodosan Ropeway
*For details, check with the management office.



HOTEL 川越王子大飯店 Kawagoe Prince Hotel
新宿線 | SHINJUKU LINE
本川越站 Hon-Kawagoe Station
埼玉縣川越市新富町1-22
1-22 Shintomi-cho, Kawagoe-shi, Saitama
☎ +81-(0)49-227-1111

HOTEL 太陽城王子大飯店 Sunshine City Prince Hotel
池袋線 | Ikebukuro LINE
池袋站 Ikebukuro Station
東京都豊島區東池袋3-1-5
3-1-5, Higashi-Ikebukuro, Toshima-ku, Tokyo
☎ +81-(0)3-3988-1111

HOTEL 新宿王子大飯店 Shinjuku Prince Hotel
新宿線 | SHINJUKU LINE
西武新宿站 Seibu-Shinjuku Station
東京都新宿區歌舞伎町1-30-1
1-30-1 Kabuki-cho, Shinjuku-ku, Tokyo
☎ +81-(0)3-3205-1111

AMUSEMENT 西武園遊樂園 Seibu-en Yuenchi
山口線 | YAMAGUCHI LINE
西武園遊園地 Seibu-en-yuenchi Station
〒359-1145 埼玉縣所澤市山口2964
2964 Yamaguchi, Tokorozawa-shi, Saitama
☎ +81-(0)4-2929-5354
日本語 Japanese only

西武球場前 Seibukyo-ji-mae
山口線 (Leo Liner) / Yamaguchi Line (Leo Liner)
西武園遊園地 Seibu-en-yuenchi
多摩湖 Tamako
武藏砂川 Musashi-Sunagawa
玉川上水 Tamagawa-josui
小川 Ogawa
西國分寺 Nishi-Kokubunji
立川 Tachikawa

HOTEL 本川越 Hon-Kawagoe
SS 29
川越王子大飯店 Kawagoe Prince Hotel

成田機場 NARITA AIRPORT
京成線 / Keisei Line

羽田機場 HANEDA AIRPORT
京急線 / Keikyuu Line

